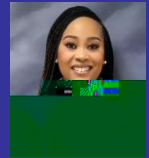




Early College High

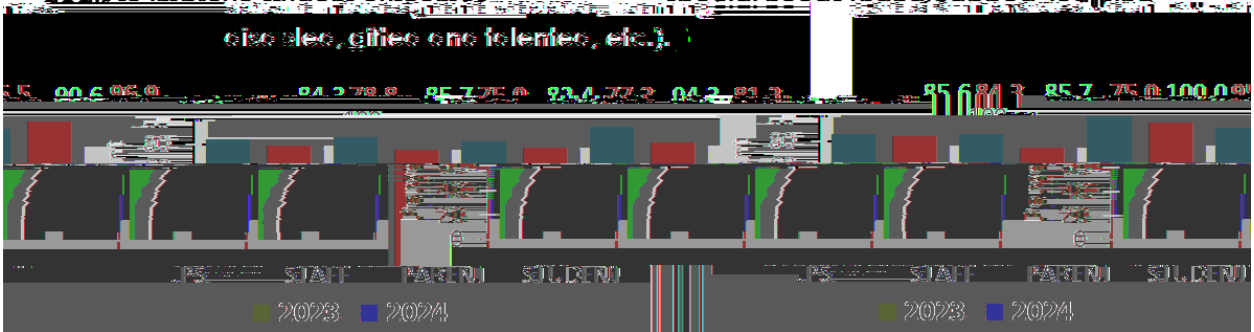
500 West County Line Road,
Tougaloo, MS 39174
(601) 977-6160
<https://www.jackson.k12.ms.us/echs>



Mrs. Ashley Molden
Principal

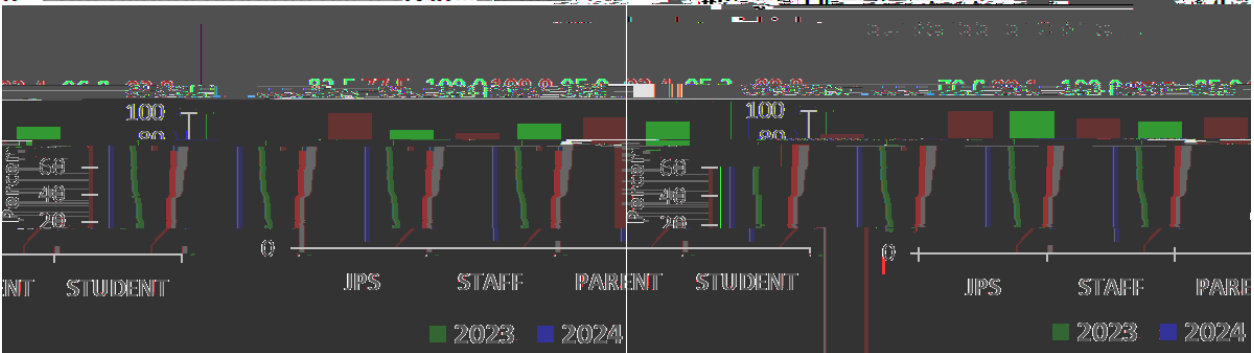
1. Leaders have established processes to develop the vision, mission, and strategic

4. The programs of this school or district meet the requirements of students with



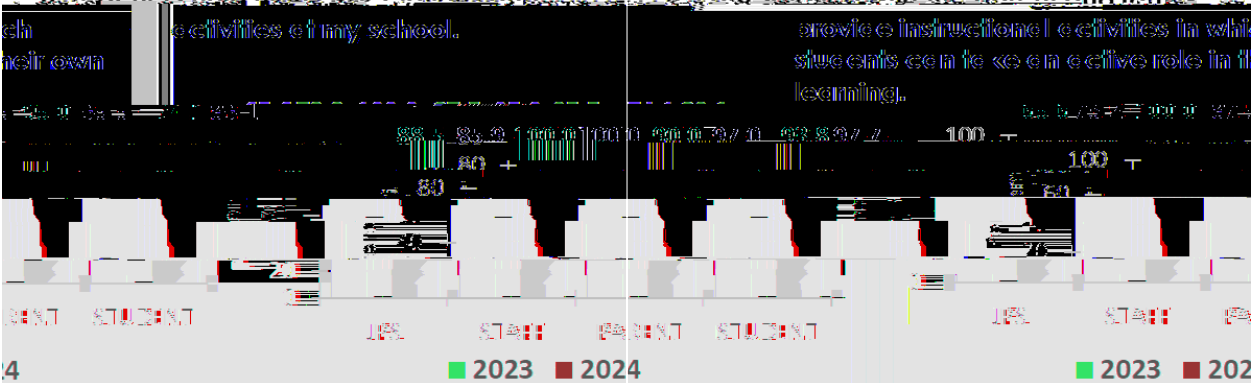
2. I am satisfied with the quality of the educational program offered to students in

5. Parents feel welcome in our school or district



3. Teachers hold high expectations and

6. I am satisfied with the parent and family





Early College High

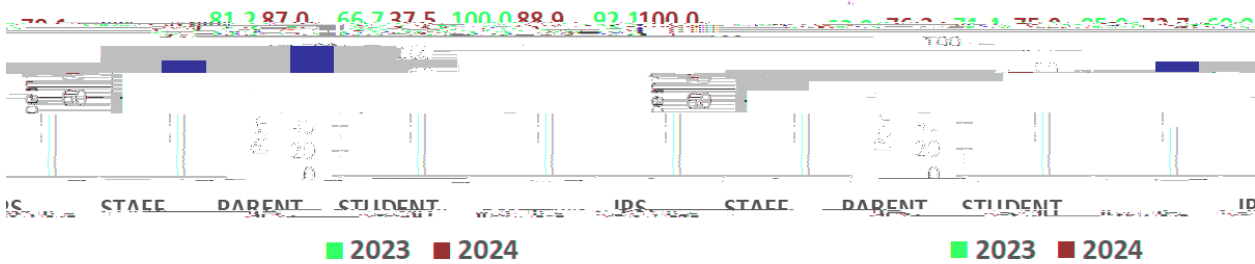
500 West County Line Road,
Tougaloo, MS 39174
(601) 977-6160
<https://www.jackson.k12.ms.us/ech>



Mrs. Ashley Molden
Principal

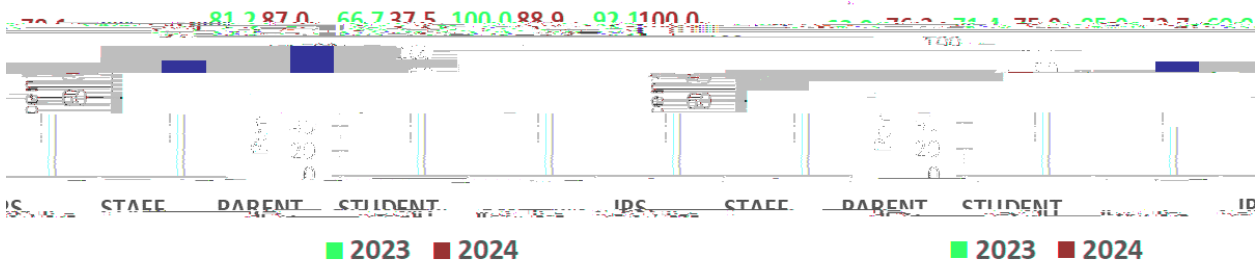
7. Our school or district provides students

programs.



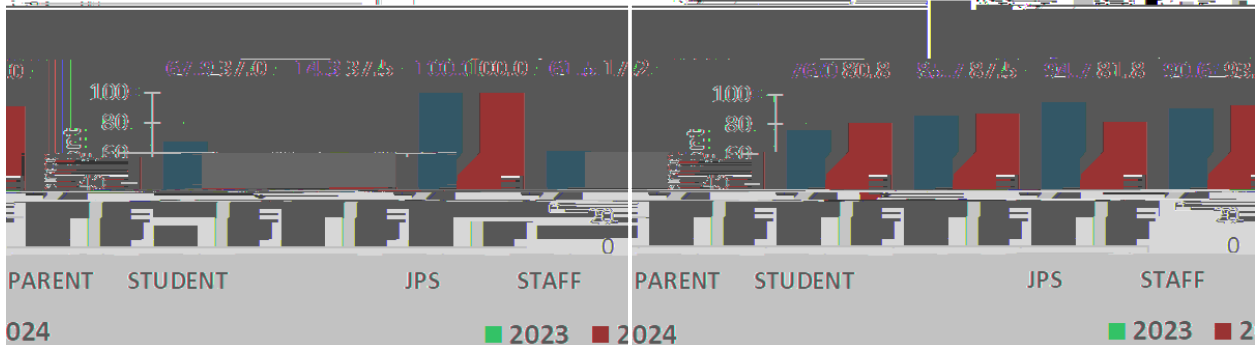
10. My child's academic performance has

improved since we started in school. How much of a concern is it for less enrollment?



9. My child's teacher is

“...”



11. Our staff are well trained to help us

increase our child's learning. How much of a concern is it for less enrollment? (counselors, specialists, instructional staff, and the level of concern that is shown for students.)

